

Sweater, Mittens & Ear Warmer Patterns | Sizes 8, 10, 12, 14



I edited this pattern from my collection of vintage patterns to include information about the original thread and substitutions. I also included metrics for all my overseas friends.

This is a vintage pattern and out of copyright in the US. Feel free to use it any way you want. You may edit it, change it, and create items for both personal and business uses.

The only thing I ask is that you not include my edited portion in any books you offer for sale.

These directions are for subteen size 8. Changes for subteen sizes 10, 12 and 14 are in parentheses.

MATERIALS

BERNAT Super Knitting Worsted (2 oz. skeins) — 7(7-8-8) Main Color (M C); 1 Contrasting Color (C C)

CYC 4 Medium worsted weight, UK Aran Australia 10ply

Any size 4 yarn should work such as:

Bernat Happy Holidays

Caron Simply Soft

Red Heart

Red Heart Holiday

1 pair No. 3 needles (3.25mm)

1 pair No. 5 needles (3.75mm)

1 set d p needles No. 3 (3.75mm)

**OR ANY SIZE NEEDLES WHICH WILL GIVE THE STITCH GAUGE
GIVEN BELOW**

1 steel crochet hook No. 0 (3.25mm)

GAUGE: 11 sts = 2 inches (5.08cm); 7 rows = 1 inch (2.54cm)

NOTE: When working designs, always carry yarn not in use loosely across back of work.

SLIPON

FRONT: Using No. 3 straight needles and M C, cast on 83(87-91-95) sts.

K 1, P 1 in ribbing for 2½ inches (6.35cm).

Change to No. 5 (3.75mm) needles and work in stockinette st until piece measures 11(11½-12-12½) inches (27.94, 29.21,30.48,31.75 cm).

SHAPE ARMHOLES: At the beg of each of the next 2 rows bind off 7 sts.

Dec 1 st each end of needle every other row 2(2-3-3) times, ending with a P row — 65(69-71-75) sts.

YOKE: Join C C and, following Chart A, work design in stockinette st until chart is completed. Break off C C.

Using M C, K 1, P 1 in ribbing until armholes measure 4½(5-5½_6) inches (11.43,12.70,13.97, 15.24 cm).

SHAPE NECK: Work 23(24-25-26) sts, sl center 19(21-21-23) sts onto a holder, join another ball of yarn and work last 23(24-25-26) sts.

Working on both sides at once, continue in ribbing, dec 1 st at each neck edge EVERY ROW 3 times.

Work even on 20(21-22-23) sts of each side until armholes measure 5½(6-6½-7) inches (13.97, 15.24, 16.51, 17.78 cm).

SHAPE SHOULDERS: At each arm edge bind off 7 sts twice and 6(7-8-9) sts once.

BACK: Work to correspond to front, omitting design, until armholes measure 3½(4-4½-5) inches (8.89, 10.16, 11.43,12.70 cm) — 65(69-71-75) sts.

K 1, P 1 in ribbing until armholes measure 5½(6-6½-7) inches (13.97, 15.24, 16.51, 17.78 cm).

SHAPE SHOULDERS: At the beg of each of the next 4 rows bind off 7 sts.

At the beg of each of the next 2 rows bind off 6(7-8-9) sts. Sl remaining 25(27-27-29) sts onto a holder.

SLEEVES: Using No. 3 straight needles and M C, cast on 40(42-44-46) sts.

K 1, P 1 in ribbing for 2½ inches (6.35cm).

Change to No. 5 (3.75mm) needles and work in stockinette st, inc 1 each end of needle every 1¼ inches 8(8-9-9) times.

Work even on 56(58-62-64) sts until piece measures 15½(16-16½-17) inches (39.37, 40.64,41.91,43.18 cm).

SHAPE CAP: At the beg of each of the next 2 rows bind off 7 sts.

Dec 1 st each end of needle every other row for 2½(3-3½-4) inches (6.35,7.62, 8.89,10.16cm).

At the beg of each of the next 6 rows bind off 2 sts. Bind off remaining sts.

FINISHING: Sew underarm, shoulder and sleeve seams. Set in sleeves.

NECKBAND: Using d p needles and M C, with right side facing you, pick up 82(84-86-88) sts around neck, including sts from holders.

K 1, P 1 in ribbing for 2 inches (5.08cm). Bind off loosely in ribbing. Block to size.

MITTENS

RIGHT MITTEN: Using No. 3 straight needles and M C, cast on 36(36-40-40) sts.

K 1, P 1 in ribbing for 2(2-2½-2½) inches (5.08, 5.08, 6.35, 6.35 cm).

Change to No. 5 (3.75mm) needles and work even in stockinette st for 4(4-6-6) rows.

SHAPE THUMB GUSSET:

Row 1: K 17(17-19-19), put a marker on needle, inc 1 st in each of next 2 sts, put a marker on needle, K 17(17-19-19).

Row 2: Purl.

Row 3: K to first marker, inc 1 st in next st, K to 1 st before 2nd marker, inc 1 st in next st, K to end of row.

Repeat Rows 2 and 3 until there are 10(10-12-12) sts between markers, ending with a P row.

On the next row K to first marker, sl these 17(17-19-19) sts onto a holder.

K to next marker, turn.

Put remaining 17(17-19-19) sts on another holder.

THUMB: Working on 10(10-12-12) sts, at the beg of each of the next 2 rows cast on 1 st.

Work even in stockinette st on 12(12-14-14) sts until piece measures desired length, ending with a P row.

SHAPE TOP: K 2 tog across row.

Break off yarn, leaving an 8 inch (20.32 cm) length.

Draw yarn through all sts on needle and pull up tightly. Sew seam.

HAND: Sl 17(17-19-19) sts from first holder onto No. 5 needle, join M C at start of thumb and pick up 2 sts over thumb seam, K 17(17-19-19) sts from second holder onto same needle — 36(36-40-40) sts. P 1 row.

On next row K 5(5-6-6), put a marker on needle, following Chart B, work design in stockinette st on next 9 sts, put a marker on needle, K to end of row.

Working even in stockinette st, continue to follow Chart B on the 9 sts between markers until Chart B has been completed.

Then work even in M C stockinette st until mitten measures 1½ inches (3.81cm) less than desired finished length, ending with a P row.

SHAPE TOP:

Row 1: * K 2 tog, K 4(4-6-6), repeat from * across row — 6(6-5-5) sts decreased.

Row 2 and all even rows: Purl.

Row 3: * K 2 tog, K 3(3-4-4), repeat from * across row — 6(6-5-5) sts decreased.

Continue in this manner to dec 6(6-5-5) sts in a row every other row until 6(6-5-5) sts remain.

Break off yarn, leaving a 12 inch (30.48cm) end.

Finish in same manner as top of thumb. Sew seam. Block.

LEFT MITTEN: Work to correspond to right mitten until thumb has been completed.

HAND: Sl 17(17-19-19) sts from first holder onto No. 5 (3.75mm) needles,

join M C at start of thumb and pick up 2 sts over thumb seam, K 17(17-19-19) sts from second holder onto same needle — 36(36-40-40) sts.

P 1 row.

On the next row K 22(22-25-25) sts, put a marker on needle, following Chart C, work design on next 9 sts, put a marker on needle, K 5(5-6-6).

Finish to correspond to right mitten.

EARWARMER

SHAPE FIRST END: Using No. 5 (3.75mm) needles and M C, cast on 5 sts.

Row 1: Join C C, and following Chart D, K 2 C C, 1 M C, 2 C C.

Row 2: P 2 C C, 1 M C, 2 C C.

Row 3: Using C C, inc 1 st in first st, K 3 M C, using C C, inc 1 st in last st.

Continuing to follow Chart D and working in stockinette st, inc 1 st each end of needle every other row 10 times more.

Continuing to follow Chart D, work even on 27 sts until 106 rows of chart have been completed.

SHAPE SECOND END:

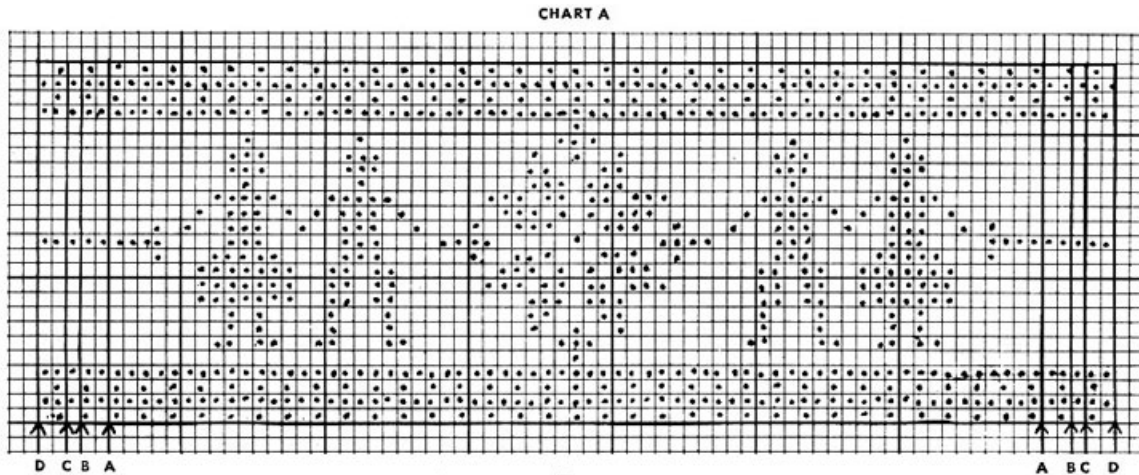
Row 1: Using C C, K 2 tog (dec), K 1, follow Chart D to last 3 sts, using C C K 1, K 2 tog (dec).

Row 2: Following Chart D, work even. Repeat these 2 rows 10 times more.

Work 1 row even. Bind off remaining 5 sts.

FINISHING: Using M C, with right side facing you, work 1 row sc (UK dc) a round all edges.

TIES: Make 2. Join M C to one point. Make ch 10 inches (25.40cm) long; work 1 sl st in each st. Fasten off. Block.



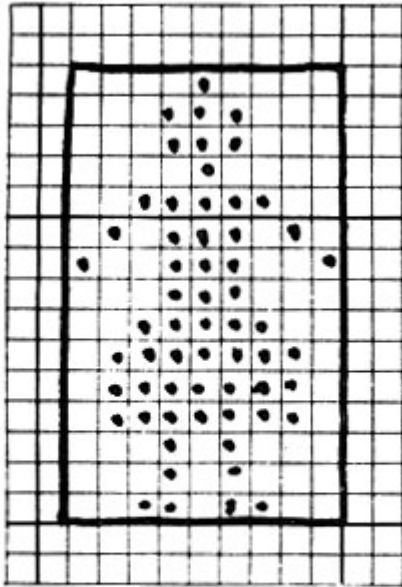
Key to Charts—□ = MC * = CC

DIRECTIONS ON USE OF CHART A

For size 8, repeat between A's. For size 12, repeat between C's

For size 10, repeat between B's. For size 14, repeat between D's.

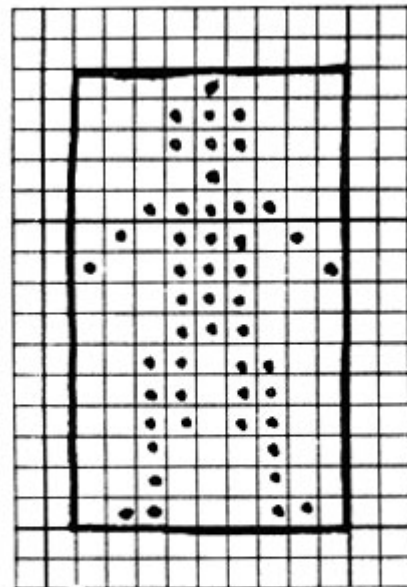
CHART B



↑
B

↑
A

CHART C



↑
B

↑
A

DIRECTIONS ON USE OF CHARTS B AND C—Repeat between A and B

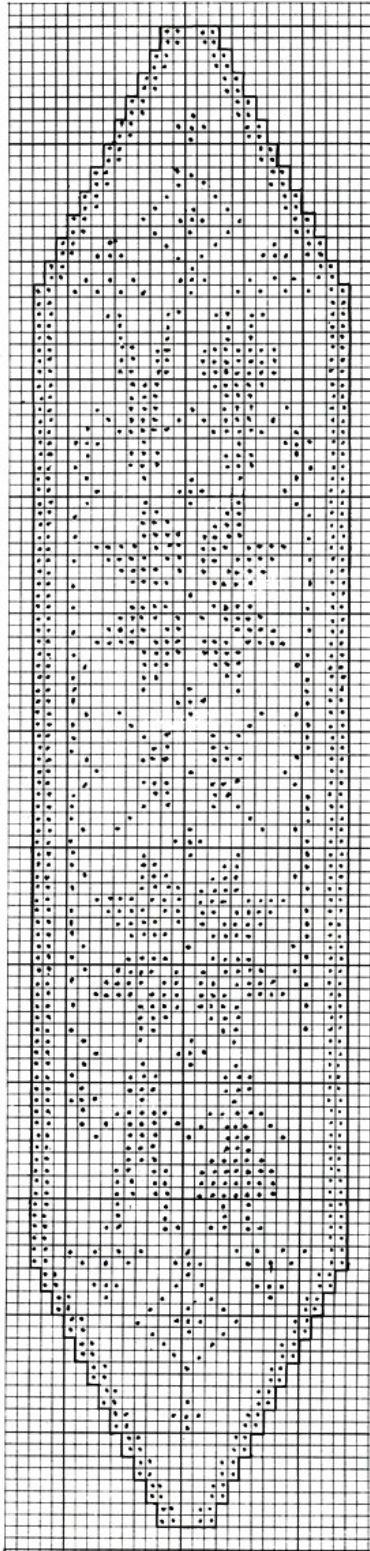


CHART D