

Pullover Sweater Pattern 5908



I edited this pattern from my collection of vintage patterns to include information about the original thread and substitutions. I also included metrics for all my overseas friends.

This is a vintage pattern and out of copyright in the US. Feel free to use it any way you want. You may edit it, change it, and create items for both personal and business uses.

The only thing I ask is that you not include my edited portion in any books you offer for sale.

These directions are for subteen size 8. Changes for subteen sizes 10, 12 and 14 are in parentheses.

MATERIALS

BERNAT Meadowspun (1 oz. pull skeins) — 6(7-7-8) Main Color (M C); 2 Color A; 1 Color B

This was a fingering weight yarn.

CYC 1 Super Fine UK 2ply Australia 3 ply

Loops and Threads Woolike (This is a Michaels Brand Yarn.)

Any sock yarn. Also Joann's carries a Caron's size one baby yarn.

1 pair straight knitting needles No. 1 (2.25 mm)

1 each 24(60.96cm) and 16 inch (40.64cm) circular needles No. 3 (3.25 cm)

OR ANY SIZE NEEDLES WHICH WILL GIVE THE STITCH GAUGE GIVEN BELOW

1 set d p needles No. 1 (2.25cm)

GAUGE: 7 sts = 1 inch (2.54cm); 10 rows = 1 inch (2.54 cm)

NOTE: Always carry yarn not in use **LOOSELY** on wrong side of work.

BACK: Using No. 1 needles and M C, cast on 102(108-114-118) sts.

K 1, P 1 in ribbing for 2(2-2½-2½) inches (5.08, 5.08, 6.35, 6.35 cm).

P 1 row, inc at even intervals to 106(111-116-121) sts.

Change to No. 3 needle and work back and forth in stockinette st until piece

measures 6½(7-7½-8) inches (16.51, 17.78, 19.05, 20.32cm) , ending with a P row.

Join Colors A and B and, following chart, * work design in stockinette st. Then work 2 rows in M C. Repeat from * 4 times more. Break off Colors A and B.

SHAPE ARMHOLES: Using M C; at the beg of each of the next 2 rows bind off 5 sts.

Dec 1 st each end of needle every other row twice, ending with a P row — 92(97-102-107) sts. Sl sts onto a holder.

FRONT: Work to correspond to back.

SLEEVES: Using No. 1 needles and M C, cast on 44(46-48- 50) sts. K 1, P 1 in ribbing for 2(2-2½-2½) inches (5.08, 5.08, 6.35, 6.35 cm).

P 1 row, inc at even intervals to 56(61-64-67) sts.

Change to No. 3 needle and work back and forth in stockinette st, inc 1 st each end of needle every ¾ inch (1.91cm) 10(10-11-12) times.

Work even on 76(81-86-91) sts until piece measures 11(11½-12-12½) inches (27.94, 29.21,30.48,31.75 cm) or 4 inches (10.16cm) less than desired length to underarm, ending with a P row.

Join Colors A and B and, following chart, work 5 pattern stripes in same manner as on back, ending with 2 rows M C.

SHAPE CAP: Using M C, at the beg of each of the next 2 rows bind off 5 sts.

Dec 1 st each end of needle every other row twice, ending with a P row — 62(67-72-77) sts. Sl sts onto a holder.

JOIN BODY AND SLEEVES: Using 24 inch needle and M C, with right side facing you K 92(97-102-107) sts of back, 62(67-72-77) sts of one sleeve, 92(97-102-107) sts of front and 62(67-72-77) sts of other sleeve.

Join and K 1 round, inc 1 st at center of each sleeve — 310(330-350-370) sts.

K round and round for 0(2-4-6) rounds more. Join Colors A and B and, following chart, * K round and round until chart is completed.

Then K 2 rounds M C. Repeat from * twice more.

Break off Colors A and B. Using M C, K even for 8 rounds more.

FIRST DEC ROUND: * K 4, K 2 tog, repeat from * 50(54-57-60) times, K 4(0-2-4) — 259(275-292-309) sts. K 9 rounds even.

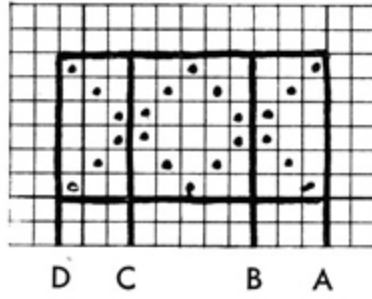
SECOND DEC ROUND: * K 3, K 2 tog, repeat from * 50(54-57-60) times, K 4(0-2-4) — 208(220-234-248) sts. K 9 rounds even.

THIRD DEC ROUND: * K 2, K 2 tog, repeat from * 51(54-57-61) times, K 0(0-2-0) — 156(165-176-186) sts. **NOTE:** Change to 16 inch (40.64cm) needle when necessary. K 9 rounds even.

FOURTH DEC ROUND: * K 1, K 2 tog, repeat from * 51(54-57-61) times, K 0(0-2-0) — 104(110-118-124) sts. K 9 rounds even.

TURTLE NECK: Change to d p needles and K 1, P 1 in ribbing for 4½ inches (11.43cm). Bind off loosely in ribbing.

FINISHING: Sew underarm and sleeve seams. Block to size.



DIRECTIONS ON USE OF CHART

Start at A and work to C, repeat between B and C, ending as between B and D.