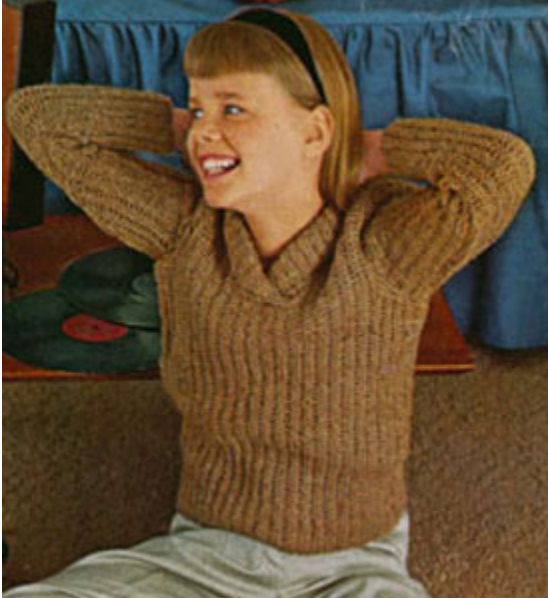


Pullover Sweater Pattern | Sizes 8, 10, 12, 14



I edited this pattern from my collection of vintage patterns to include information about the original thread and substitutions. I also included metrics for all my overseas friends.

This is a vintage pattern and out of copyright in the US. Feel free to use it any way you want. You may edit it, change it, and create items for both personal and business uses.

The only thing I ask is that you not include my edited portion in any books you offer for sale.

These directions are for subteen size 8. Changes for subteen sizes 10, 12 and 14 are in parentheses.

MATERIALS

BERNAT Glengarry Tweed (2 oz. skeins) — 5(5-6-6)

This is comparable to the following yarn.

CYC 4 Medium worsted weight, UK Aran Australia 10ply

Any size 4 yarn should work such as:

Bernat Happy Holidays

Caron Simply Soft

Red Heart

Red Heart Holiday

1 pair each straight knitting needles Nos. 5 (3.75mm) AND 10 (6mm) OR
ANY SIZE NEEDLES WHICH WILL GIVE THE STITCH GAUGE/TENSI
ON GIVEN BELOW

GAUGE: 3 sts = 1 inch (2.54cm); 8 rows = 1 inch (2.54cm).

PATTERN STITCH: Multiple of 2 sts plus 1.

Row 1: K 1, * K the next st in the row below, K 1, repeat from * across row.

Row 2: K 2, * K the next st in the row below, K 1, repeat from *, ending K 2 instead of K 1.

Repeat these 2 rows for pattern stitch.

BACK:

Using No. 5 (3.75mm) needles, cast on 47(49-51-53) sts.

K 1 row.

Work even in pattern st for 1½ inches (3.81cm).

Change to No. 10 needles and continue in pattern st until piece measures 11(11½-12-12½) inches (27.94, 29.21,30.48,31.75 cm).

SHAPE ARMHOLES:

At the beg of each of the next 2 rows bind off 3 sts.

Dec 1 st each end of needle every other row twice.

Work even on 37(39-41-43) sts until armholes measure 5½(6-6½-7) inches (13.97, 15.24, 16.51, 17.78 cm).

SHAPE SHOULDERS:

At the beg of each of the next 4 rows bind off 4(4-4-5) sts.

At the beg of each of the next 2 rows bind off 3(4-5-4) sts.

Bind off remaining 15 sts.

FRONT: Work to correspond to back until armhole shaping has been completed — 37(39-41-43) sts.

SHAPE NECK: Work 15(16-16-17) sts, join another ball of yarn, bind off center 7(7-9-9) sts, work last 15(16-16-17) sts.

Working on both sides at once, at each neck edge dec 1 st every 8th row 4(4-3-3) times.

Work even on 11(12-13-14) sts of each side until armholes measure 5½(6-6½-7) inches (13.97, 15.24, 16.51, 17.78 cm)..

SHAPE SHOULDERS: At each arm edge bind off 4(4-4-5) sts twice and 3(4-5-4) sts once.

SLEEVES: Using No. 5 (3.75mm) needles, cast on 25(25-27-27) sts. K 1 row. Work even in pattern st for 1½ inches (3.81cm).

Change to No. 10 (6mm) needles and continue in pattern st, inc 1 st each end of needle every 2½ inches (6.35 cm) 4(5-5-6) times.

Work even on 33(35-37-39) sts until piece measures 15½(16-16½-17) inches (39.37, 40.64,41.91,43.18 cm).

SHAPE CAP: At the beg of each of the next 2 rows bind off 3 sts.

Dec 1 st each end of needle every 4th row 5(6-7-8) times.

At the beg of each of the next 6 rows bind off 2 sts. Bind off remaining sts.

COLLAR: Using No. 5 needles, cast on 67(71-75-79) sts.

K 1 row. Work even in pattern st until piece measures 2½(2½-3-3) inches (6.35, 6.35, 7.62, 7.62 cm).

SHORT ROWS:

Row 1: Work to last 3 sts, turn.

Row 2: Sl 1, work to last 3 sts, turn.

Continue in this manner to work 3 sts less EVERY ROW until 13(17-21-25) sts remain on last short row, turn.

Sl 1, work to end of needle. Bind off.

FINISHING: Sew underarm, shoulder and sleeve seams. Set in sleeves. Sew shaped edge of collar to neck. Sew short edges of collar to bound off sts at center front, with right side overlapping left side. Block to size.

